

MCSC

annual report 2007/2008

organizing
cooperation
progressing



building

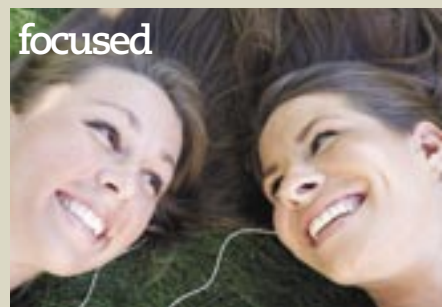
MCSC

MANITOBA COMMUNITY SERVICES COUNCIL INC.

Supporting the work of your community volunteers



committed



focused

supporting
planning

optimistic
community



volunteer board members & staff 2007/08

Volunteer Board Members

- BOB ASHUK** : Winnipeg, Manitoba
STUART BRIESE : Neepawa, Manitoba*
CARLY DUBOFF : Winnipeg, Manitoba
BRIAN ELLIS : Winnipeg, Manitoba
IAN GOODALL-GEORGE : Oakbank, Manitoba
JANICE GOODMAN : Winnipeg, Manitoba
BLAIR HAMILTON : Arnaud, Manitoba
MARGIE HANNAH : Waskada, Manitoba
HANK HILDEBRAND : Winkler, Manitoba
NADIA KIDWAI : Winnipeg, Manitoba
SOON KONG : Winnipeg, Manitoba
PAUL NEWMAN : Winnipeg, Manitoba
JOEY ROOSWINKEL : Winnipeg, Manitoba
CONRAD ROBINSON : Swan River, Manitoba
CINDY RUBLEE : Winnipeg, Manitoba
JACQUES SAQUET : Laurier, Manitoba
MELVA SPICER : Thompson, Manitoba
LORAIN TURCOTTE : Brandon, Manitoba

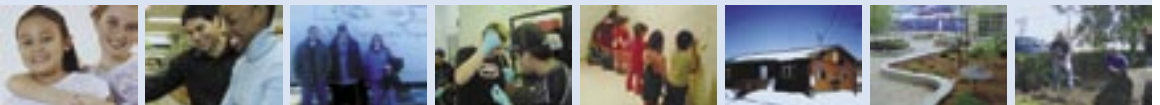
*Resigned

MCSC Staff

- CATHERINE ROBERTS** : Executive Director
GARY BORSE : Financial Services Officer
MICHELLE CHUDD : Grants Officer
MARLENE HARLOCK : Grants Officer
GAIL PARKER : Administrative Assistant

*As an organization,
we remain committed
to making decisions
in a thoughtful and
progressive manner.*

building
committed
optimistic
focused
community



chairperson's report 2007/08 fiscal year

The 2007-08 fiscal year has been both exciting and challenging for the Manitoba Community Services Council. As always, we have processed hundreds of applications throughout the province and from every nook and cranny of the voluntary sector. You may reference the Executive Director's report for the specific statistics. As has been the case for a number of years, the requests for grants and bingo events has far exceeded the resources available to us. We remain optimistic that the Province of Manitoba will continue to entertain our requests for expanded funding.

Amid the normal flurry of activity, the organization continued to build upon themes identified in our business plan, using our expanded and revitalized committee structure to involve Council Members more deeply in planning and organizational development. For instance, our Marketing Committee developed a new form of signage for distribution to organizations receiving MCSC grants, and has started in on a new look for our website.

The ad hoc Mandate Review Committee engaged council in a broad overview of the principles behind our funding decisions, in an effort to reduce potential overlap with other funders, and to bring our specific mandate into sharper focus. This was a painstaking process, and while it resulted in few dramatic changes, it has required us to be more conscious of our collective motivations. Whether this will be a continuing theme for Council remains to be seen.

As reported at the last AGM, Council established a Strategic Priorities Committee to work on proactive initiatives identified within our business planning process. Progress has been slow but steady as staff and Council members collaborate on a process to investigate, design and then implement these initiatives. Both the process and the proactive orientation are a departure from the norm for MCSC, so there has been plenty of learning along the way. We have initiated an exciting partnership on Rural Capacity Building with Volunteer Manitoba. Other initiatives targeting Aboriginal, immigrant and senior's organizations remain in development.

Concurrently with all this, the organization was confronted with the possibility of changes at the staff level, as several potential retirements loomed. We retained a human resources consultant to help us plan for some anticipated turnover, examine the staffing model and to review our personnel policy manual. At the close of this fiscal year, not all staffing matters had sorted themselves out, but we had added Michelle Chudd to the team, and she has been an absolute dynamo (yellow highlighters notwithstanding). As an organization, we remain committed to making human resource decisions in a thoughtful and progressive manner.

In closing, I would like to give a lot of thank you's. I would like to thank the Province of Manitoba for their continued financial support. I would like to thank the external members of our Nominating Committee for assisting us in identifying the three able nominees you will be considering at this meeting. I would like to thank my fellow Council Members for their patience, cooperation, and for taking on expanded roles as we tried new things. I would like to thank our staff, who have worked hard and diligently as we added things to their plate, and asked them to stretch their comfort zone. Lastly of course, I would like to thank all of the applicant community organizations who are doing the truly valuable work that it is our privilege to assist.

Respectfully Submitted,

Blair Hamilton
Chairperson

cooperation

planning

committed

MCSC's funding is essential to the work that non-profit organizations undertake to improve their communities.

progressing

executive director's report

2007/08 fiscal year

The strength of Manitoba Community Services Council is in its volunteers and over the past year 18 dedicated individuals have spent numerous hours travelling to and attending meetings, reviewing applications and making funding decisions in order to grant funds in a fair and equitable manner to non-profit, volunteer organizations across Manitoba.

This year we welcomed 7 new members to Council. The new members reside in Thompson, Waskada, Laurier, Oakbank and Winnipeg and join the other 11 members from areas across Manitoba. Our volunteers all share one common goal and that is to assist volunteer groups with the work they do in their communities.

The staff have been amazing this past year and their dedication to MCSC was very evident as we dealt with some changes and challenges. When the staff complement was unexpectedly reduced to two, Gail Parker assisted greatly in keeping the office humming along. As Gail's retirement approaches in the coming year we know she will be greatly missed by staff and Council members. In September we welcomed Gary Borse back to MCSC and his even hand in getting us back on track was greatly appreciated. A new Grants Officer, Michelle Chudd, was hired in October and her enthusiasm and energy are much appreciated. We have missed Marlene Harlock but we are happy to report that she has been working hard to get better and we look forward to her return to MCSC. Staff and the Marketing Committee developed new signage for MCSC and the signs have been well received in the community. We are excited to begin work on updating our website and upgrading our computer equipment. Staff worked with the Strategic Priorities Committee on Rural Capacity Building, Seniors Initiative, and Birthday Book projects.

Over the course of the year staff visited numerous groups, and attended many opening ceremonies and celebrations recognizing MCSC's contributions to projects. Staff participated in a number of workshops and presentations including Volunteer Manitoba's Funder's Forum, Community Places Program Project Planning Workshop in Dugald and a Project Planning Workshop in Portage la Prairie.

The Public Interest Disclosure (Whistleblower Protection) Act was adopted and an officer was designated to deal with disclosures. There were no disclosures to report this year.

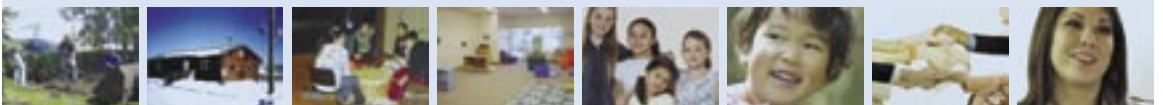
In 2007/08 a total of 283 applications were received; 198 were approved; 9 were declined, 1 was deferred; 5 were withdrawn and 70 were under review at year end.

As MCSC approaches its 25th year, our volunteers and staff can feel proud of their work in supporting volunteers and communities across Manitoba.

Respectfully Submitted,

Catherine Roberts
Executive Director

building cooperation
committed



grant allocations

2007/08

Bingo Events - Eve (Evening)
Bingos earn \$3,000; E/L (Early/Late)
Bingos earn \$1,500; Mat (Matinee)
Bingos earn \$1,800. Groups provide
7 volunteers to work these events.
Bingo events are allocated over
more than one quarter.

CHILD CARE CENTRES

TOTAL: \$256,000

(includes \$125,200; 26 Eve, 34 E/L,
1 Mat Bingos)

Ashworth Children's Centre

New computer systems - 1 Eve

Beginnings Preschool Inc.

Equipment - \$1,000, 1 Eve

Centre Soleil Centre Inc.

Equipment, furnishings - 1 Eve, 2 E/L

Discovery Children's Centre

Renovations - \$12,000, 2 Eve, 4 E/L

Erickson Kiddie Kollege Inc.

Operating costs - \$1,200, 1 Mat

Fisher Branch Care-A-Lot

Furniture, equipment - 1 Eve

Garden Grove Child Care Program

Building addition - \$10,000, 5 Eve

Kids Centre Co-op Inc.

Operating costs - 1 Eve, 2 E/L

Kings Park Child Care Centre

Renovations - \$17,000, 4 Eve

Kirkfield Westwood Nursery School

Storage cupboards, equipment - \$1,000,
2 E/L

Le P'tit Bonheur Inc.

Renovations - \$10,000, 1 Eve, 2 E/L

Little People's Place

Upgrades to building - \$3,000, 2 E/L

Narol Children's Centre

Operating costs - \$4,000, 4 E/L

Peter Pan Nursery Inc.

Addition, renovations - \$15,000

Petits Choux Daycare Inc.

Renovations, equipment - \$2,000, 3 Eve

St. Vital Montessori School Inc.

Operating costs - 4 E/L

Stonewall Children's Centre

New child care facility - \$19,000, 1
Eve, 2 E/L

TLC Centre

Construction new building - \$6,000,
2 Eve, 2 E/L

Transcona Jaycees Day Care

Windows and loft - \$4,000, 2 E/L

Treasure Keepers Children's Centre

Operating costs - \$6,000, 1 Eve, 2 E/L

Wawanesa Wee Care Inc.

Computer, toys, equipment - \$2,000,
1 Eve

Wee Care Child Centre Carman

Sprinkler system - \$10,000, 1 Eve, 2 E/L

West Kildonan Tiny Tots

Office equipment - \$2,000, 2 E/L

CHILDREN & YOUTH

TOTAL: \$262,195

(includes \$188,095; 13 Eve, 21 E/L,
2 Mat Bingos)

Art City

Operating costs - \$15,000

Big Sisters/Big Brothers Brandon

Operating costs - \$3,000, 1 Eve



Block Parents of Winnipeg

Insulation, LED reflectors - \$1,400, 2 E/L

Boy Scouts of Canada Manitoba Council

Equipment and supplies - \$15,000

Camp Arnes

High Ropes project - \$3,000, 1 E/L

Child Find Manitoba

"All About Me" ID program - \$6,000,
2 Eve, 2 E/L

Graffiti Art Programming Inc.

Program costs - \$12,000, 2 Eve, 2 E/L

International Centre Winnipeg Newcomer Children/Youth Program - \$18,000

Lord Selkirk Boy Scout Pipe Band

Musical instruments - \$5,000, 1 Mat

Lynn Lake Friendship Centre

Playground, computers, recreation
equipment - \$20,000

Manitoba Children's Museum Inc.

Access Program costs - \$1,500, 4 E/L



Parkland Youth Centre Inc.
Renovation costs \$15,000

Resource Assistance for Youth (RaY)
Purchase, renovations for new building
- \$20,000, 3 Eve, 2 E/L

Springfield Kinsmen Youth Centre
Wheelchair lift - \$18,195, 1 Mat

The Horse Connection
Operating costs - \$4,000, 4 E/L

Wellman Lake United Church Camp
Multi-purpose hall - \$12,000

West Broadway Youth Outreach Inc.
Program costs - \$2,000, 1 Eve, 2 E/L

Youth Employment Service (Y.E.S.)
Organizational review, computers
- \$7,000 2 Eve, 2 E/L

Youth for Christ - St. Pierre
Renovations and furnishings - \$10,000,
2 Eve

Le Comite Culturel Chateauguay
Sound system - 1 Eve

Manitoba Conservatory of Music & Arts
Inner city Music Outreach Program
- \$3,000, 3 Eve, 2 E/L

Manitoba Printmaker's Association
New roof, lighting, millwork - \$7,000, 1
Eve, 2 E/L

Manitoba Theatre for Young People
Flooring, carpet - \$1,000, 2 Eve, 2 E/L

Sam Waller Museum
Lighting upgrades - \$8,000

St. Claude Historical Society
Office furniture and roofing - 2 Eve,
2 E/L

**Sudan Relief and Rehabilitation
Program**
Program and operating costs - \$20,000,
2 Eve, 2 E/L

Swan Valley Historical Museum
Purchase and renovations of Harley
House - \$20,000

Virden Community Arts Council
Construction of workstation - \$3,000

Virden Pioneer Home Museum
Renovations, repairs, gazebo, fence,
shed - \$3,468

**FAMILY AND
COMMUNITY
TOTAL: \$609,173**
(includes \$410,573; 46 Eve, 38 E/L,
2 Mat Bingos)

**Arborg Bifrost Parks and
Recreation Commission**
Gazebo and fitness station - 2 Eve

B.P.O. Elks #20 Russell
New flooring - \$6,000

**Bifrost Municipal Airport
Commission**
Renovations and windows - \$1,224,
1 Eve

Border Regional Library
Vestibule, automatic doors, book return
- \$1,700, 1 E/L

**Bruxelles Community Development
Committee**
Storage shed, equipment - \$1,500, 2 E/L

Bruxelles Recycling
Baler - 1 Mat

**Canadian Parks and Wilderness
Society MB**
Computers and equipment - 2 E/L

**Centre for Aboriginal Human
Resource Development**
Equipment - \$10,000, 3 Eve, 4 E/L

**Community Partnership Committee
for Pregnant and Parenting Youth**
Furniture, equipment - \$17,670

Community Respite Service
Program, operating costs - \$1,700, 2 Eve

Community Unemployed Help Centre
Computer upgrades, office equipment
- \$15,000

Cypress River Memorial Hall
Repairs to geo-thermal system, Doors
- \$3,000, 1 Eve, 2 E/L

Elma Community Social Club
Renovation costs - \$3,000, 1 Eve

**Emerson Cooperative Community
Centre**
Furnace and painting - \$800, 1 Eve

Erickson Communities in Bloom
Friendship garden development - \$3,500

Fisher Branch Recreation Centre
Renovations - \$6,000, 3 Eve

Fort Garry Women's Resource Centre
After Hours/Flex Hours Counselor
- \$20,000

Friedensfeld Community Centre
Refinish hardwood floors - 1 Eve, 2 E/L

Friends of St. Mark's Inc.
New roof - \$3,200

Hearthstone Community Group
Tub surround, draperies, furniture,
dishwasher - 2 Eve

- 5 -

**CULTURE/ART/
HERITAGE GROUPS**

TOTAL: \$168,068

(includes \$101,468; 15 Eve, 12 E/L,
2 Mat Bingos)

**African Canadian Foundation for
Culture and Economic Development**
Operating costs - \$6,000, 2 E/L, 2 Mat

**Association Culturelle
Franco-Manitobaine**
Office equipment - \$2,000, 1 Eve

Crossing Communities Art Project Inc.
Program and operating costs - \$25,000,
2 Eve

Inglis Area Heritage Committee Inc.
Operating costs - \$3,000, 1 Eve



Building
committed



Immigrant and Refugee Community Organizations

Program costs - \$10,000, 1 Eve, 2 E/L

Inglis and District Community Club

New roof, stucco and tables - \$10,000, 2 Eve

Kinsmen Club - Treherne

Playground development - \$3,000, 1 Eve

Lorne Community Handivan

Asphalt, shelving, cabinets - \$5,000, 1 Mat

Manitoba Eco-Network

Youth Engagement project, operating costs - \$2,000, 4 E/L

Manitoba in Bloom

Coordinator's position, sustainability planning - \$25,000

Manitoba League of Persons with Disabilities

Operating costs, strategic planning - \$25,000

Manitou Public Library

Building renovations - 1 Eve

Marble Ridge Colony Community

Playground development - \$10,000

Miniota Archie Community Development Corporation

Interpretive lookout - \$3,668

Miniota Park Revamping Committee

Playground development - \$15,000, 2 Eve

Minnedosa Regional Library/Ishii Garden Committee

Develop Japanese garden, green space - \$2,000, 1 Eve

Moosehorn Community Club

Operating costs, flooring - \$7,000, 1 Eve

Mrs. Lucci's Resource Centre

Emergency shelter, transitional housing - \$25,000, 2 Eve, 2 E/L

Native Clan Organization

Computer and printer - \$3,611

North End Community Renewal Corporation

Operating costs Ambassador project - \$10,000

Notre Dame Meeting Place

Sub-Committee

New community building - \$10,000, 1 Eve, 2 E/L

O-Chi-Chak-Ko-Sipi First Nation

Powwow Committee

Powwow arbor - \$20,000, 1 Eve

Oak Point Community Club

New kitchen, refinishing floor, doors - \$11,000, 2 Eve, 2 E/L

Oyate Tipi Cumini Yape

Operating costs - \$10,000, 1 Eve, 2 E/L

Patricia Beach Community Club

New flooring - 1 Eve

Reseau Action Femmes

Needs assessment - \$14,000

Roseau River Park

Painting, washrooms, canteen - \$2,000, 2 Eve

Roseisle Community Park

Playground development - \$3,000, 1 Eve

St. Leon Recreation Committee

Renovation costs to hall and rink - \$3,000, 1 Eve

Shell River Metis Association

Washroom facilities - \$20,000

Shoal Lake & District Playground Committee

Playground development - \$5,000

South Norfolk-Treherne Community Development Committee

Fencing and relocation costs of glass bottle buildings - 2 Eve

Ste. Agathe Cultural and Community Centre

Acoustical wall panels - \$1,000, 1 Eve, 2 E/L

Swan River Community Centre

Lighting and flooring - \$10,000

Tabor Home Inc.

Handicap doors - \$5,000, 1 Eve

Teulon-Rockwood Centennial Centre

Tables - \$5,000, 2 E/L

The Pas Association for Human Development

Geo-thermal system, solar hot water system - \$17,000

Thompson Public Library

Heating system - \$6,000

Warren Park Development Inc.

Phase II of park development - \$4,000, 1 Eve, 2 E/L

Whiteshell Community Club Inc.

Storage building, skating shack, furnace - \$5,000, 2 Eve, 2 E/L

Zbruch Community Centre

New doors - \$3,000

Zhoda Community Hall

Repairs and renovations - \$6,000, 1 Eve

Zoological Society of Manitoba

Program costs - 3 E/L



HEALTH

TOTAL: \$292,100

(includes \$229,100; 17 Eve,
8 E/L Bingos)

Canadian Porphyria Foundation
Coordinator salary - \$15,000

Compassionate Friends Winnipeg Chapter

Bereavement support, community outreach - 2 E/L

Continuity Care

Operating costs - \$10,000, 2 Eve

First Nation Healing Centre Koostatak
Van purchase - \$15,000, 2 Eve

Gimli Community Health Centre
Phase 4 of Healing garden - \$4,000, 1 Eve

Hospice and Palliative Care Manitoba
Two staff positions - \$17,000

- 7 - **Huntington Society of Canada - MB Chapter**

Operating costs Family Services Program - \$6,000, 3 Eve, 2 E/L

Jocelyn House

Operating costs - \$6,000, 3 Eve, 2 E/L

Klinic Community Health Centre
Healthy Living Program - \$32,100

Laurel Centre

Addition to building - \$40,000

Manitoba Schizophrenia Society - Norman

Operating costs for drop-in centres in Flin Flon and The Pas - \$15,000



Manitoba Schizophrenia Society - Winnipeg

Program costs - \$10,000, 1 Eve

Osborne House Inc.

Van, computers and office chairs - \$33,000

Portage Fitness Co-op

Treadmill, elliptical machines - \$5,000, 2 Eve, 2 E/L

SSCOPE Inc.

Truck purchase - \$21,000, 3 Eve

RECREATION

TOTAL: \$261,170

(includes \$157,670; 26 Eve,
17 E/L Bingos)

Beausejour Curling Club

Carpet for ice shed - \$2,000, 1 Eve

Beausejour Slo-Pitch League

Side and dugout fencing - 1 Eve, 2 E/L

Binscarth Park and Pool Committee

Screen door, paint, pump - \$6,000

Bowsman & District Curling Club

Compressor, operating costs - \$7,500

Bunibonabee Cree Nation Recreation Committee

Canoes, paddles, life jackets - \$9,685

East Winnipeg Sports Association
Soccer pitches at Buhler Recreation Park - \$11,000, 2 Eve, 2 E/L

Emerson Minor Sports Association
Rubber flooring in rink - \$5,000

Gilbert Plains Country Club
Electrical upgrades - \$8,000

Gimli Spray Pool Project
Spray Park facility - \$10,000, 2 Eve

Glenella Recreation Commission
New roof, renovation costs - \$2,000, 2 Eve

Holland Recreation Council
Arena renovation costs - \$10,000, 2 Eve, 2 E/L

Manitoba Runners Association
Clock, trailer, computer equipment - \$2,000, 4 E/L

McCreary Curling Club
Operating costs - \$3,000

Morrison Sports Park
Operating costs - \$3,000, 1 Eve

Ninette-Pelican Lake Development Corporation
Washroom, office upgrades, playground - \$3,700, 1 Eve

Pembina Triangle Trap Club
Voice release system, microphones - 1 Eve



Pilot Mound Swimming Pool

Tile change rooms - \$4,000, 1 Eve

Rathwell Skating Rink Inc.

Landscaping, painting - 1 Eve, 2 E/L

Reston Rockets Baseball Club Association

Upgrades to field, water system, dugouts - \$2,000, 1 Eve

Rivers Soccer Park Committee

Mower and shed - \$1,000, 1 Eve

Roland Golf Club

Greens mower - 1 Eve, 1 E/L

Rosburn Skating Rink

Tables, fans, carpets - \$2,785

St. Laurent Sports Committee/ St. Laurent Recreation Centre

Artificial ice, air conditioning - \$10,000, 3 Eve, 2 E/L

Selkirk Canoe and Kayak Centre

Buried cable service - \$1,000, 2 E/L

Snow Lake Curling Club

Repairs to ice chiller - \$8,000

Souris Glenwood Memorial Complex

Zamboni - \$12,000, 3 Eve

Town of Souris Pool Fund

New pool - \$24,000, 2 Eve

Waskada Community Rink

Ice resurfacer - \$10,000

Ecole Crane Advisory Council

Accessible playground development - \$10,000, 4 E/L

Ecole Dugald School Parent Association

Computers - \$10,000, 1 Eve, 2 E/L

Ecole James Nisbet School Parent Association

Accessible playground development - \$9,000, 1 Eve, 2 E/L

Hartney Playground Committee

Playground development - \$15,000, 1 Eve

Heyes School Parent Council

Playground development - \$22,000

I.O.D.E. Diamond Jubilee

Books and book bags - \$3,000, 1 Eve

Juniper School Parent Advisory Council

Playground development - \$20,000

Killarney Parent Advisory Council

Purchase cross-country skis - \$1,000, 1 Eve

Minnedosa Band Parents Association

Musical instruments, equipment - 2 Eve

Neil Campbell Parent Advisory Council

Playground development - \$8,000, 2 Eve, 2 E/L

Peguis First Nation Science, Engineering & Technology Symposium

Education Symposium - \$6,000, 3 Eve

Playground Learning Apparatus for Youth

Playground development - \$3,000, 1 Eve, 2 E/L

Reston School Band Program

Musical instruments - \$3,000



S.P.A.D.E. Foundation

Community green space - \$15,000, 2 Mat

Southwood School (Steinbach) Parent Council

Playground development - \$6,000, 1 Eve, 2 E/L

St. John's Presbyterian Church Outreach Program

Read More Write More outreach project - \$5,000, 2 E/L

Ste. Anne Elementary Parent Advisory Council

Smart Board, equipment, library resources - \$4,250

Transcona Literacy Centre

Copier - \$1,500, 2 E/L

Treherne Collegiate Advisory Council

Basketball backboards, rims - \$3,000, 1 Eve

Yellowquill College

Purchase Phraselators - 1 Eve, 2 E/L

Yellowquill School Advisory Council

Playground development - \$12,000, 1 Eve, 2 E/L



SCHOOLS/ EDUCATION

TOTAL: \$247,350

(includes \$156,750; 17 Eve, 24 E/L, 2 Mat Bingos)

Austin Parent Advisory Council

Playground development - 2 E/L

SENIORS

TOTAL: \$146,400

(includes \$80,400; 13 Eve, 18 E/L Bingos)

Anola Over 50 Club

Flooring and lighting - \$20,000, 2 E/L

Association des Residents de l'Accueil Colombien

Shuffleboard, equipment - \$1,000, 2 E/L

Benito & Area Drop-in Centre

New flooring - \$7,000

Creative Retirement Manitoba

Operating costs - \$6,000, 2 Eve, 6 E/L

Flin Flon Creighton Seniors Inc.

Tables and chairs - \$5,160

Gimli Seniors Resource Council

Lifeline units - \$4,000, 2 Eve

Gladstone Senior Support Program

Computer upgrades - \$1,200

Gwen Sectar Creative Living Centre

Flooring - \$4,000, 2 E/L

Keewatin/Inkster Neighbourhood Resource Council

Computer equipment, copier - \$3,190, 1 Eve

Kildonan Horizons Tenant Association

Large screen TV - \$1,850

Oak Park Estate Inc.

Large screen TV/TV stand, VCR/DVD player - 1 Eve

Prince of Peace Senior Social Centre

Operating costs - \$3,000

Riverside Lions Estates Non-Profit Housing

Furniture, blinds for amenity spaces - \$8,000, 2 Eve, 4 E/L

St. James-Assiniboia Seniors Centre

Operating costs - \$6,000, 2 Eve, 2 E/L

St. Laurent Community Development Corporation

Operating costs for Assisted Living Centre - \$2,000, 2 Eve

Seniors Independent Services

Computer, printer, software - \$2,000

Teulon and District Seniors Resource Council

Operating costs - 1 Eve

Tolstoi and District Seniors

Interior renovations - \$6,000



allocations 2007/08

progressing

building

ALLOCATIONS

\$1,449,256

\$519,000

173 Eve Bingos

\$258,000

172 E/L Bingos

\$16,200

9 Mat Bingos

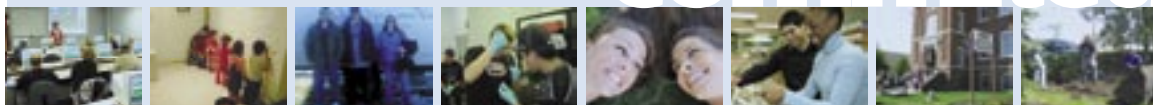
TOTAL

\$2,242,456

A total of \$793,200 will be earned from Bingo events. MCSC allocates these events, however, 100% of the earnings from these events goes directly to the organizations to support their projects.

PHOTOS ARE COURTESY OF THE IDENTIFIED ORGANIZATIONS

committed



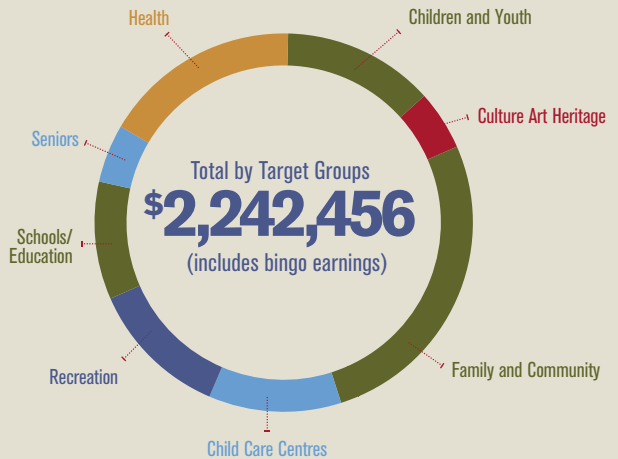
analysis summary

from April 2007 – March 2008

BY TARGET GROUPS

HEALTH (13%)	\$ 292,100
CHILDREN & YOUTH (12%)	\$ 262,195
CULTURE ART HERITAGE (7%)	\$ 168,068
FAMILY & COMMUNITY (27%)	\$ 609,173
CHILD CARE CENTRES (11%):	\$ 256,000
RECREATION (12%)	\$ 261,170
SCHOOLS/EDUCATION (11%)	\$ 247,350
SENIORS (7%)	\$ 146,400
TOTAL	\$ 2,242,456

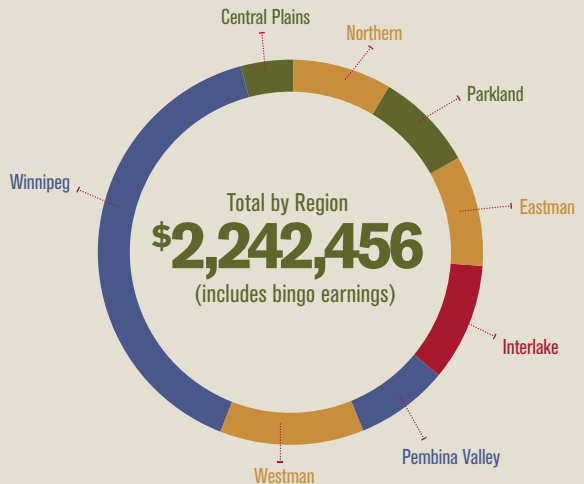
(includes Bingo earnings)



BY REGION

CENTRAL PLAINS (4%)	\$ 97,200
NORTHERN (7%)	\$ 150,345
PARKLAND (8%)	\$ 172,453
EASTMAN (10%)	\$ 218,645
INTERLAKE (10%)	\$ 225,224
PEMBINA VALLEY (6%)	\$ 144,800
WESTMAN (10%)	\$ 228,538
WINNIPEG (45%)	\$ 1,005,251
TOTAL	\$ 2,242,456

(includes Bingo earnings)



Thomas Tasker Chartered Accountant Inc.

200-960 Portage Avenue Telephone (204) 783-3118
Winnipeg, Manitoba R3G 0R4 Fax (204) 783-7541

Thomas Tasker, CA

Del Halliday, CMA

MANITOBA COMMUNITY SERVICES COUNCIL INC.

FINANCIAL STATEMENTS: MARCH 31, 2008

AUDITOR'S REPORT

To the Members of
Manitoba Community Services Council Inc.

I have audited the balance sheet of Manitoba Community Services Council Inc. as at March 31, 2008 and the statements changes in net assets and financial activities for the year then ended. These financial statements are the responsibility of the Council's management. My responsibility is to express an opinion on these financial statements based on my audit.

I conducted my audit in accordance with Canadian generally accepted auditing standards. Those standards require that I plan and perform an audit to obtain reasonable assurance whether the financial statements are free of material misstatement. An audit includes examining, on a test basis, evidence supporting the amounts and disclosures in the financial statements. An audit also includes assessing the accounting principles used and significant estimates made by management, as well as evaluating the overall financial statement presentation.

In my opinion, these financial statements present fairly, in all material respects, the financial position of the Manitoba Community Services Council Inc. as at March 31, 2008 and the results of its operations and the changes in its financial position for the year then ended in accordance with Canadian generally accepted accounting principles.

Chartered Accountant

Thomas Tasker

Winnipeg, Manitoba
May 13, 2008

MANITOBA COMMUNITY SERVICES COUNCIL INC.

BALANCE SHEET

MARCH 31, 2008

<u>Assets</u>	2008	2007
Current assets		
Cash	\$ 72,080	\$ 445,041
Accrued interest	27,315	14,447
GST refund	3,600	5,149
Prepaid expense	6,300	5,554
Guaranteed investment certificates (note 3)	<u>579,275</u>	<u>592,481</u>
	688,570	1,062,672
Guaranteed investment certificates (note 3)	504,605	78,600
Capital assets (note 4)	<u>3,455</u>	<u>9,908</u>
	<u>\$ 1,196,630</u>	<u>\$ 1,151,180</u>
 <u>Liabilities</u>		
Current liabilities		
Accounts payable and accrued liabilities	\$ 9,701	\$ 8,431
Allocations not yet paid (note 9)	359,701	717,410
	369,402	725,841
 <u>Net assets</u>		
Invested in capital assets	3,455	9,908
Funds for Priority Area Strategy (note 8)	345,159	-
Funds for future allocation (note 9)	478,614	415,431
	827,228	425,339
	<u>\$ 1,196,630</u>	<u>\$ 1,151,180</u>

Approved on Behalf of the Board



Director

MANITOBA COMMUNITY SERVICES COUNCIL INC.

STATEMENT OF CHANGES IN NET ASSETS

FOR THE YEAR ENDED MARCH 31, 2008

	Invested in Capital Assets	Funds for Priority Area Strategy	Funds for Future Allocation	Total 2008	Total 2007
Balance, beginning of year	\$9,908	\$ ---	\$ 415,431	\$ 425,339	\$ 412,346
Funds for Priority Area Strategy	---	350,000	---	350,000	---
Excess (deficiency) of revenue over allocations and expenses	(6,453)	(4,841)	63,183	51,889	12,993
Invested in capital assets	---	---	---	---	---
Balance, end of year	\$3,455	\$345,159	\$478,614	\$827,228	\$425,339

MANITOBA COMMUNITY SERVICES COUNCIL INC.

STATEMENT OF FINANCIAL ACTIVITIES

FOR THE YEAR ENDED MARCH 31, 2008

	2008	2007
Revenue		
Province of Manitoba		
Manitoba Culture, Heritage, Tourism and Sport	\$ 1,993,600	\$ 1,986,800
Interest	52,949	40,593
	2,046,549	2,027,393
Allocations and expenses		
Administrative expenses		
Bank charges	1,019	1,075
Consulting	3,873	2,164
Consulting - Priority Area Strategy	4,841	---
Computer expense	14,676	15,280
Courier	1,637	1,006
Equipment rental	12,205	8,610
Insurance	4,880	4,868
Meeting costs and volunteer travel	23,421	23,095
Office supplies	12,975	7,422
Postage	3,218	1,694
Professional fees	3,650	3,320
Telephone	5,871	5,797
	92,266	74,331
Amortization	6,453	6,070
Occupancy	28,583	27,804
Salaries and benefits	214,195	219,923
Grant allocations	1,449,256	1,734,972
Grant allocations (recovered)	(146,093)	(48,700)
Funds for Priority Area Strategy	350,000	---
	1,994,660	2,014,400
Excess of revenue over allocations and expenses	\$ 51,889	\$ 12,993

MANITOBA COMMUNITY SERVICES COUNCIL INC.

NOTES TO THE FINANCIAL STATEMENTS

MARCH 31, 2008

1. Incorporation

Manitoba Community Services Council Inc. (Council) was incorporated under The Corporations Act of Manitoba on March 13, 1990 without share capital, created for the purpose of distributing bingo events and provincial funds to non-profit community organizations on behalf of the Province of Manitoba.

2. Summary of significant accounting policies

The financial statements have been prepared in accordance with Canadian generally accepted accounting principles and include the following significant accounting policies:

a) Statement of cash flows

A statement of cash flows has not been presented since information concerning cash flows is evident from the financial statements presented.

b) Guaranteed investment certificates

Guaranteed investment certificates are carried at cost.

c) Capital assets

Capital asset acquisitions are capitalized in the year of purchase at values equal to cost. Amortization is provided for on a straight-line basis at the following rates which will amortize the cost of the assets over their estimated useful lives:

Furniture and equipment	20%
Computer equipment	30%
Computer software	50%

d) Revenue recognition

Revenue is recognized when it is probable that the economic benefits will flow to the Council and when the revenue can be reliably measured.

MANITOBA COMMUNITY SERVICES COUNCIL INC.

NOTES TO THE FINANCIAL STATEMENTS, CONT'D

MARCH 31, 2008

2. Summary of significant accounting policies, cont'd

e) Measurement uncertainty (use of estimates)

These financial statements have been prepared in accordance with Canadian generally accepted accounting principles which require management to make estimates and assumptions that affect the reported amounts of assets and liabilities and disclosure of contingent assets and liabilities at the date of the financial statements and the reported amounts of income and expenses during the reporting period. Actual results may differ from management's best estimates.

These estimates and assumptions are reviewed periodically and, as adjustments become necessary they are reported in earnings in the periods in which they become known.

f) Financial instruments

The company's financial instruments consist of cash, guaranteed investment certificates, accrued interest, accounts payable and allocations not yet paid. Unless otherwise noted, it is management's opinion that the Council is not exposed to significant interest, currency or credit risks arising from these financial instruments.

Financial risk

The financial risk is the risk to the Council's earnings that arises from fluctuations in interest rates and the degree of volatility of those rates. The Council does not use derivative instruments to reduce its exposure to interest rates.

Credit risk

Credit risk arises from the potential for an investee to fail or default on its contractual obligations to the Council. The Council limits credit risk by investing in investees that are considered to be high quality credits and by utilizing an internal investment policy.

Fair value

The fair value of these financial instruments approximate their carrying value due to their short-term maturity.

- 16 -

MANITOBA COMMUNITY SERVICES COUNCIL INC.

NOTES TO THE FINANCIAL STATEMENTS, CONT'D

MARCH 31, 2008

3.	Guaranteed investment certificates	2008	2007
	Due within one year, interest rates of 3.25% to 4.85%	\$ 579,275	\$ 592,481
	Long-term investment certificates, due in October, 2009 and October, 2010, interest rates of 5.3% and 5.35%.	\$ 504,605	\$ 78,600

4. Capital assets

	2008		2007	
	Cost	Accumulated Amortization	Cost	Accumulated Amortization
Furniture and equipment	\$ 22,962	\$ 22,828	\$ 22,962	\$ 22,645
Computer equipment	13,842	12,838	13,842	11,204
Computer software	9,270	6,953	9,270	2,317
	<u>\$ 46,074</u>	<u>\$ 42,619</u>	<u>\$ 46,074</u>	<u>\$ 36,166</u>
Cost less accumulated amortization		<u>\$ 3,455</u>		<u>\$ 9,908</u>

5. Provincial funding

The Province of Manitoba has committed funding in the amount of \$1,998,800 for the year ended March 31, 2009.

6. Commitment

The Council has leased realty pursuant to a lease agreement, until May 31, 2010. Under the terms of the lease, the Council is responsible for base rent and its proportionate share of property taxes and operating costs of the building.

The minimum base rent payments for the next two years are as follows:

2009	\$ 11,854
2010	11,854

MANITOBA COMMUNITY SERVICES COUNCIL INC.

NOTES TO THE FINANCIAL STATEMENTS, CONT'D

MARCH 31, 2008

7. Pension plan

The employees of the Council participate in the United Way Agencies Pension Plan, a multi-employer, defined benefit pension plan, which is accounted for as a defined contribution plan. The Council's pension contribution and expense for the year was \$6,679 (2007 - \$12,139).

8. Funds for Priority Area Strategy

At the April 24, 2007 meeting of Council, the Mandate Committee presented a Priority Area Strategy, and Council approved the allocation of \$350,000 for this plan. The Committee identified three initiatives which were approved by Council.

1. Literacy Replication Project with Indian and Metis Friendship Centers
2. Rural Capacity Building Project
3. Immigrant and Aboriginal Seniors

9. Restatement of 2007 financial statements

In March 2007, the financial statements recorded the recovery of a community grant. The community organization returned the funds to Manitoba Community Services Council Inc. and the receipt was recorded as a recovery. During the current fiscal year the organization was reorganized and the allocation of the original funds were reinstated. The 2007 financial statements have been retroactively restated to correct the error. An adjustment of \$19,711 has been made to increase allocations not yet paid and reduce funds held for future allocation as at March 31, 2007.

10. Bingo hall earnings

The Council allocates a certain number of bingo events to various organizations that it funds. Numerous community service organizations earned a total of \$819,900 (2007 - \$786,300) through participation in bingo events.

The funds received from bingos are paid directly by the Manitoba Lotteries Corporations to the above organizations. These funds are not reflected on the statement of financial activities.

planning
about
MCSC

cooperation

Manitoba Community Services Council Inc. (MCSC) allocates funds and/or bingo events to Manitoba volunteer non-profit organizations.

Established in 1984 by the Province of Manitoba, MCSC funds projects and services of community service, social service, recreation and health-related organizations. MCSC operates as an arms-length organization. A committee of volunteers, representative of the Manitoba community, is responsible for the allocation of dollars and/or bingo events.

MCSC reports to the Minister of Culture, Heritage, Tourism and Sport. A certain number of bingo events are provided to MCSC by Manitoba Lotteries Corporation each year and these events are allocated to applicant groups.

building

progressing

committed
committed

Thank you to all of the applicant community organizations who are doing the truly valuable work that it is our privilege to assist.

focused
community
optimistic

