



Manitoba
Community
Services
Council Inc.

Supporting Manitoba non-profit community service organizations
with funding provided by the Province of Manitoba.

ANNUAL REPORT
2004/2005



Supporting Manitoba non-profit community service organizations with funding provided by the Province of Manitoba

Annual Report 2004/2005

102 – 90 Garry Street
Winnipeg, Manitoba R3C 4H1
Phone: (204) 940-4450
Fax: (204) 453-2692
email: applications@mbcsc.ca
website: www.mbcsc.ca





Supporting Manitoba non-profit community service organizations with funding provided by the Province of Manitoba

ABOUT MCSC

Manitoba Community Services Council, Inc. (MCSC) was established in 1984 by the Province of Manitoba, as part of an umbrella system, to serve the voluntary sector in Manitoba.

MCSC's role is to allocate funds and/or bingo events to Manitoba organizations qualifying as participants under the Community Services umbrella.

MCSC funds projects and services of community service, social service, recreation and health-related organizations. Other umbrellas distribute money to Arts, Sports, Multicultural and Heritage groups.

The Province of Manitoba funds MCSC and the Council reports to the Minister of Culture, Heritage and Tourism. MCSC also receives a certain number of bingo events each year from Manitoba Lotteries Corporation. MCSC operates as an arms-length organization. A committee of volunteers, representative of the Manitoba community, is responsible for the allocation of dollars and/or bingo events.

2004/05 VOLUNTEER BOARD MEMBERS

BOB ASHUK – **Winnipeg**, Manitoba
MICHELLE CHUDD - **Lac Du Bonnet**, Manitoba
DARRELL WILLIAM COLE - **Winnipeg**, Manitoba
LAURA DIAMOND - **Winnipeg**, Manitoba
RHONDA FORGUES - **Winnipeg**, Manitoba
BLAIR HAMILTON – **Arnaud**, Manitoba
SUSAN HARRISON - **Thompson**, Manitoba
HANK HILDEBRAND - **Winkler**, Manitoba
KAREN MATHIESON - **Winnipeg**, Manitoba
JIM McSWEENEY - **Steinbach**, Manitoba
PAUL NEWMAN - **Winnipeg**, Manitoba
SHEILA NORTH - **Winnipeg**, Manitoba
KEVIN REBECK - **Winnipeg**, Manitoba
CONRAD ROBINSON – **Swan River**, Manitoba
CINDY RUBLEE - **Winnipeg**, Manitoba
GWENDOLYN D. SNELL – **Hamiota**, Manitoba*
ROSEALINE A. WATT - **Reston**, Manitoba
ANNE WRIGHT - **Brandon**, Manitoba

* Resigned

CHAIRPERSON AND EXECUTIVE DIRECTOR REPORT

For the past 21 years the Manitoba Community Services Council (MCSC) has supported thousands of non-profit organizations in their efforts to provide recreation, social service, community development and health related services throughout the province of Manitoba. Through the provision of \$1,685,531 and 354 bingo events to 227 community organizations in the past year, the Manitoba Community Services Council continues to be a key funding source for many grass roots community organizations.

None of this would have been possible without the generous support of the Province of Manitoba, Department of Culture, Heritage and Tourism, which provides the funds for MCSC to carry out its mandate. In addition, Manitoba Lotteries Corporation provides the bingo events to support volunteer, non-profit organizations under MCSC's mandate. We appreciate the confidence they both have placed in our volunteer board to allocate funds fairly across Manitoba.

As Chairperson, I am particularly proud of the dedication and due diligence provided by the Board of Directors in their efforts to ensure that the grants and bingos are distributed in a fair and impartial manner. The board is comprised of 9 rural and 9 Winnipeg members who collectively review approximately 300 applications annually. They truly are representative of the diverse interests and dedicated community volunteers throughout the province. I commend them on a job well done.

The small team of dedicated staff who administer the day to day operations of the MCSC are second to none. They provide both support and guidance to the various community groups throughout the application process, and strategic support and guidance to the Board of Directors. Their professionalism and dedication to the goals of the Council are very much appreciated.

We are pleased to present our 2004/05 Annual Report. As you read through it you will see the many organizations that provide support to families, youth and communities throughout Manitoba.

In closing, I would like to thank the board and staff for another successful year in helping to make Manitoba a great place to live.

Karen Mathieson
Chairperson

Catherine Roberts
Executive Director

GRANT ALLOCATIONS – 2004/2005

**Evening Bingos earn \$3,000; Share the Wealth Bingos earn \$1,500; Matinee Bingos earn \$1,800. Groups provide 10 volunteers to work these events. Bingo events are allocated over more than one quarter.

CHILDREN AND YOUTH

TOTAL CHILDREN AND YOUTH - \$76,000,
10 Evening, 12 Share the Wealth Bingos

Block Parents of Winnipeg, Inc.

Data entry, promotion costs - 2 Share the Wealth Bingos

B'nai B'rith Jewish Community Camp

Building construction - \$2,000, 2 Evening Bingos

Child & Family Services of Western Manitoba

Program and operating costs - \$25,000, 1 Evening Bingo

Girl Guides of Canada/Bishop Grandin Area

Development coordinator - \$6,000, 4 Share the Wealth Bingos

Lord Selkirk Boy Scout Pipe Band

Band equipment - 1 Evening, 2 Share the Wealth Bingos

New Friends Community Mentorship Inc.

Program costs - \$2,000

Peter Pan Club Inc.

Toys, equipment - \$1,000, 2 Share the Wealth Bingos

RLC Youth Leadership Inc.

2005 Program costs - \$11,000, 2 Evening, 2 Share the Wealth Bingos

Royal Canadian Army Cadet #19 Parent Committee

Band instruments - 1 Evening Bingo

Royal Canadian Army Cadets Sgt. Tommy Prince #553 Parent Committee

Equipment and program costs - \$9,000, 2 Evening Bingos

The Horse Connection Inc.

Program costs - \$5,000, 1 Evening Bingo

Youth for Christ MacGregor

Renovations for Drop-in Centre - \$15,000

CHILD CARE CENTRES

TOTAL CHILD CARE CENTRES - \$131,946,
20 Evening, 13 Share the Wealth, 1 Matinee Bingo

Assiniboine Kiddie Kollege Day Care

Commercial dishwasher - \$5,000



Assiniboine Kiddie Kollege Day Care, Brandon

Carter Day Care Centre, Inc.

Equipment, toys - \$5,000

Crestview Park Day Nursery

Renovations and computer upgrades - \$6,000, 4 Share the Wealth Bingos

Faith Children's Centre Inc.

Addition - \$6,000, 2 Evening Bingos

Happiness Is

Chairs, computer software - 1 Matinee Bingo

J. A. Cuddy Children's Centre
Playground development - 2 Evening Bingos

Kid Gloves Day Care Inc.
Family literacy program, resources for lending library - \$5,000



Kid Gloves Day Care Inc., Winnipeg

Kinder Korner Early Learning Centre
Grounds development - \$9,000

Learning and Growing Day Care Inc.
Playground development - 2 Evening Bingos

Little Day Buddies Nursery School
Program costs, equipment purchase - \$10,000,
1 Evening Bingo



Little Day Buddies Nursery School, Lac du Bonnet

Magical Memories Learning Centre Inc.
Renovations - \$10,000, 1 Evening Bingo

Minto Nursery/Day Care Centre
Renovations, equipment, operating costs - \$5,000,
1 Evening Bingo



Minto Nursery/Day Care Centre

North Kildonan Little Thinkers Inc.
Equipment, start-up costs - \$20,000

Parkland Campus Kids Inc.
Program costs - \$10,000

Selkirk Day Care
Outdoor playground equipment - 1 Evening, 2 Share the Wealth Bingos

Shoal Lake Kids' Club
Renovation costs - \$14,000, 1 Evening Bingo

Soleil Centre
Computer equipment - \$1,000, 1 Evening Bingo

South Park Child Care Co-op
Computer equipment upgrades - 1 Evening Bingo

Spring Meadows School Age Centre
Activity supplies - 1 Share the Wealth Bingo

Stanley Knowles Childrens' Centre
Kitchen renovations, cooler and convection oven -
2 Share the Wealth Bingos

Teulon Day Care Centre
New day care facility - \$8,000, 2 Evening Bingos

Tinker Bell Nursery School Inc.
Equipment and toys - \$946

Transcona Jaycees Day Care Inc.
Appliances, shelving, equipment, carpet - 2 Evening,
1 Share the Wealth Bingo

Tyndall Park Parent and Tot

Equipment and supplies - 1 Share the Wealth Bingo

Wild Honey Children’s Centre

Art/activity supplies, music program, books - \$3,000,
1 Evening Bingo

Wild Strawberry Children’s Centre

Renovations - \$10,000, 2 Share the Wealth Bingos

Windsor Park Children’s Care Centre

Window coverings, dishwasher, carpet, painting,
washer and dryer - \$4,000, 2 Evening Bingos

CULTURE/ART GROUPS

TOTAL CULTURE/ART - \$75,675, 9 Evening,
9 Share the Wealth, 1 Matinee Bingo

Crossing Communities Art Project

Operating costs and building renovations - \$25,000,
2 Evening Bingos



Crossing Communities Art Project, Winnipeg

Foxwarren Historical Society

Upgrades, renovations and repairs - \$2,675

Glenboro Gaiety Theatre

Operating costs - 1 Evening Bingo

Manitoba Conservatory of Music and Arts Inc.

Pianos - 2 Evening, 2 Share the Wealth Bingos

Manitoba Printmakers’ Association

Operating costs - \$13,000

Mountain Music Festival Somerset Committee

Piano, stage lights, master console - 1 Evening,
1 Share the Wealth Bingo

Prairie Players

Lighting and dimmer system - \$6,000, 4 Share the
Wealth Bingos



Prairie Players, Portage la Prairie

Prairie Theatre Exchange

Outreach project with Norway House drama students -
\$5,000, 1 Evening Bingo

Reston Memorial Theatre

Operating costs - \$3,000



Reston Memorial Theatre

Selkirk Community Choir

Sheet music, percussion instruments - 1 Matinee
Bingo

Spanish Club of Winnipeg, Inc.

Program and operating costs - \$1,000, 2 Share the Wealth Bingos

Strathclair & District Theatre Committee Inc.

Siding, soffits/fascia, driveway, sidewalk - \$3,000,
1 Evening Bingo



Strathclair & District Theatre Committee, Inc.

Viriden Community Arts Council

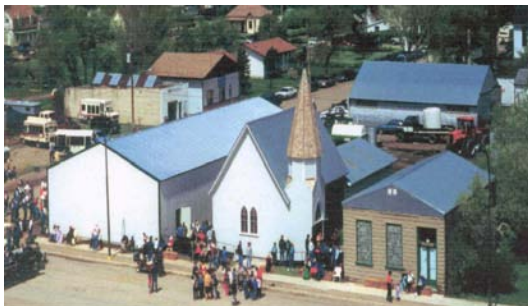
Storage building - \$7,000

Viscount Cultural Council Inc.

Computer purchases - 1 Evening Bingo

Waskada Museum Committee

Renovations - \$10,000



Waskada Museum Committee

FAMILY AND COMMUNITY

TOTAL FAMILY AND COMMUNITY - \$791,000,
69 Evening, 39 Share the Wealth, 2 Matinee Bingos

African Canadian Disability Community Association

Culturally sensitive employment service delivery program - \$27,000, 1 Evening Bingo

Andrews Street Family Centre

Sakitowin program costs -\$20,000, 3 Evening, 4 Share the Wealth Bingos



Andrews Street Family Centre, Winnipeg

Angusville Community Centre

Insulate interior walls - \$6,000

Arborg Bifrost Parks & Recreation Commission

Construction of new community hall - \$25,000,
2 Evening Bingos

Arrow River Community Hall

Renovations - \$10,000

Association for Community Living – Selkirk

Renovations - \$10,000, 2 Evening Bingos

Bibliotheque Montcalm Municipal Library

Computer purchase - 1 Evening Bingo

Brandon Community Welcome Cooperative Inc.

Heating/boiler system - \$25,000



Brandon Community Welcome Cooperative Inc.

Canadian Hostelling Association – Manitoba Inc.

Operating costs - \$15,000, 3 Evening Bingos

Career Connections

Pro 3000 assessment tool - \$3,000, 3 Evening Bingos



Career Connections, Brandon

Carrick Community Club Inc.
Renovations - 3 Evening Bingos

Centre Flavie-Laurent
Operating and renovation costs - \$7,000, 1 Evening Bingo

Circle of Life Thunderbird House
Dance arbor, change rooms, security system - \$10,000, 7 Share the Wealth, 1 Matinee Bingo

Community Foundations of Canada – Manitoba
Regional Coordinator for Manitoba - \$15,000

Compassionate Friends – Winnipeg Chapter
Bereavement Support and Outreach costs - 1 Evening Bingo

Continuity Care Inc.
Program and operating costs - \$10,000, 2 Evening Bingos

Crystal City Lions Club/Community Hall Management Committee
Porch replacement costs and wheelchair ramp - \$2,000, 1 Evening Bingo

Dauphin Agricultural Society
Wash rack - \$7,000

Dauphin Beach Committee
Playground development - \$12,000

Earthshare Organic Co-op Inc.
Operating costs - \$6,000, 1 Evening Bingo

Elie Community Club
Upgrades to annex building - 4 Share the Wealth Bingos

Eriksdale Public Library
Renovations - \$12,000, 1 Evening Bingo



Earthshare Organic Co-op Inc., Winnipeg

Foxwarren Memory Gardens
Sprinkler system and lighting - \$1,500, 1 Evening Bingo



Foxwarren Memory Gardens

Friends of Harris Park
Playground development - 1 Evening, 2 Share the Wealth Bingos

Friends of Spruce Woods Inc.
Playground development - \$7,000, 1 Evening Bingo

Grand Rapids First Nation Health Authority
Playground development in two areas of community - up to \$45,000

Hamiota Community Centre
Addition to building, upgrades, sound system - \$8,000, 1 Evening Bingo

Hands of Hope
Operating costs - \$5,000, 4 Share the Wealth Bingos

Harding Community Club
Floor coverings - \$1,000, 1 Evening Bingo

Holland Agricultural Society
New barn roof - 1 Evening Bingo

Horsemen's Benevolent and Protective Association
Literacy program costs - 1 Share the Wealth Bingo

Kelsey Recreation Commission
Multi-use recreation facility construction - \$30,000

Killarney & District Handi-Van Committee Inc.
Handi-van purchase - \$13,000

Lac du Bonnet Community Centre Inc.
Improvement projects - \$5,000, 1 Matinee Bingo

La Residence de Lourdes Inc.
Wheelchair ramp - \$10,000

Little Britain Community Club
Upgrading and renovations - \$4,000, 2 Evening Bingos

Lorne Community Handivan
Garage, office space - \$13,000, 1 Evening Bingo

Lynn Lake Friendship Centre
Van purchase - \$25,000



Lynn Lake Friendship Centre

Manitoba Agricultural Museum
Playground development - 1 Evening Bingo

Manitoba Association for Rights and Liberties
Photocopier - 2 Evening Bingos

Manitoba Association of Women's Shelters
VOICES database system - \$20,000

Manitoba Eco-Network Inc.
Leasehold improvements - \$10,000, 4 Share the Wealth, 1 Evening Bingo

Meadows Community Club
Roof repairs - 2 Evening Bingos

Middlebro Community Centre
Painting costs - 1 Share the Wealth Bingo

Moosehorn Community Club
Repairs and renovations - \$2,000, 1 Evening Bingo

New Directions for Children, Youth and Families
Ndaawin program costs - \$15,000

Ninette & District Centennial Hall Inc.
Wheelchair ramp and renovations - \$10,000,
2 Evening Bingos

North Norfolk MacGregor Regional Library
Computers, furniture and equipment - \$7,000,
1 Evening Bingo

Portage la Prairie Industrial Exhibition Association
Campground upgrades - 2 Evening, 2 Share the Wealth Bingos

Prairie Places Inc.
Purchase new home - \$8,000



Prairie Places Inc., Winnipeg

Pulford Community Living Services
Renovations and purchase of home - \$15,000

Rathwell Memorial Hall Cooperative Inc.
Tables and chairs - \$2,000, 1 Evening Bingo

Red River Valley Parent-Child Centre Inc.
Program costs, purchase of supplies - 2 Evening Bingos

Resource Conservation Manitoba
Compost Action project - \$5,000, 1 Evening Bingo

Riverdale Place Homes Inc.
Addition, equipment - \$10,000, 1 Evening Bingo

Riverdale Place Workshop Inc.
Recycling trailer - \$4,000

Rock Ridge Community Council
Renovations to outdoor rink, new well for rink,
basketball pad - \$15,000

Roseau Crossing Heritage Park Inc.
Pool heater, fencing, picnic tables, exhaust fan -
\$4,000, 1 Evening Bingo

Rotary Club of Transcona/Centenary Park
Playground development - \$5,000

Ryerson Family Centre
Sofa and carpet - \$2,500

St. Adolphe Community Club
Renovations to change rooms, washroom, office - \$7,000, 1 Evening, 4 Share the Wealth Bingos



St. Adolphe Community Club

St. Claude Recreation Centre
Stoves, flooring, fire suppression system - \$5,000, 2 Evening Bingos

St. Jean Baptiste Parks & Recreation Association
Community hall renovations - \$15,000, 1 Evening, 2 Share the Wealth Bingos

St. Laurent Cooperative Recreation Centre Inc.
Addition construction - \$8,000, 3 Evening, 2 Share the Wealth Bingos

St. Malo Metis Local Inc.
Tent purchase - 2 Evening Bingos

Ste. Rose Regional Library
Computers and software - \$3,000

San Clara & District Recreation Co-op
Renovations - \$12,000

Sioux Valley Dakota Nation Wacipi Committee
Arbor construction - \$18,000

Snow Lake Family Resource Centre
Operating costs, Office Assistant position - \$10,000

Society for Manitobans with Disabilities Inc.
Ethnocultural program - \$20,000

Swan River Community Centre
Renovations - \$14,000

Swan River Legion Community Hall, Inc.
New roof - \$25,000

Swan River Valley Agricultural Society
Pole barn construction - \$10,000

Swan Valley Crisis Centre
Education Coordinator/Counselor position - \$24,000

Swan Valley Inter-Agency
Coordinator's position - \$9,000

Teulon-Rockwood Centennial Centre
New roof - \$5,000, 2 Share the Wealth Bingos

Tyndall Village Community Centre
New furnaces and stacking chairs - \$15,000, 2 Evening Bingos

Valley Agricultural Society
Renovations and upgrades to barns - \$3,000, 2 Evening Bingos

Waterhen Community Council
Cement pad - \$10,000

Western Manitoba Women's Regional Resource Centre Inc.
Program director and sustainability plan - \$25,000

Whiteshell Community Club Inc.
Renovations - \$14,000, 1 Evening Bingo

Winnipeg River Resource Centre
Additional classroom, counselling and program space - \$15,000, 2 Evening Bingos

Zbruch Community Centre
Roof repairs - 1 Evening Bingo

HEALTH

TOTAL HEALTH - \$127,800, 3 Evening, 3 Share the Wealth Bingos

Canadian Porphyria Foundation
Public Awareness project - \$8,000



Canadian Porphyria Foundation, Neepawa

Central Plains Cancer Care Services
Program costs - \$6,300, 1 Evening Bingo

Central Speech and Hearing Clinic Inc.
Auditory testing booth, auditory equipment - \$15,000,
3 Share the Wealth Bingos

Esther House Inc.
Operating and program expenses - \$12,000

Hospice and Palliative Care Manitoba
Education Coordinator position - \$20,000

Manitoba Brain Injury Association
Peer Support programs - \$30,000



Manitoba Brain Injury Association

Mood Disorders Association of MB - Winnipeg
Computer equipment, public lecture series - \$20,000,
1 Evening Bingo

Parkinson Society Manitoba Chapter
Speech Therapy program - \$8,000, 1 Evening Bingo

Shoal Lake & District Community Fitness Co-op
Treadmill - \$4,500

Social Planning Council of Winnipeg
Well Being in the Workplace manual - \$4,000

RECREATION

TOTAL RECREATION - \$228,700, 22 Evening,
25 Share the Wealth Bingos

AKI Paddle Club
Canoes and equipment for youth program - \$10,000



AKI Paddle Club, Wanipigow



AKI Paddle Club, Wanipigow

Anola Community Club/Anola Soccer Committee
Soccer field development - \$2,000, 4 Share the Wealth Bingos

Birch River Recreation Commission
Pool and deck repairs - \$10,000

Cartier Arena Committee
Ice resurfacer - \$9,000, 4 Share the Wealth Bingos

Churchill Ladies Club
Pool renovations - \$25,000

Delahunt Golf and Country Club Inc.
New clubhouse building - \$11,000, 2 Evening, 2 Share
the Wealth Bingos



Delahunt Golf and Country Club, Holland

East Winnipeg Sports Association Inc.
Phase II of Transcona Recreation Park - \$9,000,
4 Share the Wealth Bingos

Gimli Recreation Authority
Tables and chairs purchase - \$6,000, 2 Evening
Bingos

Hamiota Aquatic Centre
Equipment, improvements - \$10,000

Hamiota & District Sports Complex Inc.
Ice resurfacer - \$14,000, 1 Evening Bingo

Inter Ridge Recreation District

Computers - \$1,500

Koko Platz Recreation Club Inc.

New arena boards, fencing, benches, lights - \$5,000,
1 Evening, 2 Share the Wealth Bingos

Lac du Bonnet Youth Recreation Centre/

Lac du Bonnet Skateboard Park

Skateboard Park Phase II - \$4,000, 2 Evening Bingos

Letellier Athletic Association

Insulating south wall of arena - 1 Share the Wealth
Bingo

Manitoba Camera Club

Digital projector, laptop computer - 1 Evening Bingo

Miami Curling Club

Insulation, roof renovations, emergency door upgrades
- \$6,000, 1 Evening Bingo

Miniota Golf Club

Greens improvements - \$18,000, 2 Evening Bingos

Oakburn Memorial Rink

Furnishings, equipment - \$10,000

Oak Lake District Arena

Ice resurfacing machine - \$9,000, 2 Evening Bingos



Oak Lake District Arena

Parkland Taekwondo Association

Program costs in small, remote communities - \$15,000

Pembina Triangle Trap Club Inc.

Trap loading machine - \$3,000, 1 Evening Bingo

St. James Rods Football Club

Clubhouse addition - \$15,000, 4 Share the Wealth
Bingos

San Clara & District Curling Club

Renovations - \$9,000

Souris Minor Baseball

Upgrades to diamonds, new batting cage - \$6,000, 2
Evening Bingos

Splash Regional Aquatic Centre Inc.

Boiler system and solar heating system - \$8,000,
4 Share the Wealth Bingos

Tangled Threads Quilt Guild

Display frames and clips - \$1,200

Teulon-Rockwood Arena Board

Grade beam repairs - \$5,000, 2 Evening Bingos

Treherne Community Curling Club Inc.

Roof and ceiling repairs - \$6,000, 1 Evening Bingo



Treherne Community Curling Club Inc.

Western Dance Leaders Association

Hall rental, instructor fees - \$1,000

Winkler Curling Club

Roof repairs, holding tank, ice-making machine –
2 Evening Bingos

SCHOOLS

TOTAL SCHOOLS - \$197,000, 29 Evening,
75 Share the Wealth, 3 Matinee Bingos

Alf Cuthbert School Parent Advisory Council

Playground enhancements - \$5,000, 1 Evening Bingo



Alf Cuthbert School Parent Advisory Council, Moosehorn

Anola School Parent Council/Playground Committee

Playground development - \$4,000, 1 Evening, 3 Share the Wealth Bingos

Beaumont School Parent Council

Playground development - \$9,000, 2 Share the Wealth Bingos

Border Valley School Parent Advisory Council

Playground development - \$10,000

Comite de Parents de l'Ecole Pointe-des-Chenes

Playground development - \$5,000, 2 Evening, 4 Share the Wealth Bingos

Dr. F.W.L. Hamilton Parent Advisory Council

Playground development - \$5,000, 1 Evening, 4 Share the Wealth Bingos

Daerwood School Parent Advisory Council

Playground development - \$2,000, 1 Evening, 2 Share the Wealth Bingos



Daerwood School Parent Advisory Council, Selkirk

Dawson Trail School Parent Advisory Council

Playground development - \$5,000, 2 Share the Wealth Bingos

Ecole Julie Riel Parent Association

Playground development - \$3,000, 1 Evening, 4 Share the Wealth Bingos

Ecole Riverview School Parent Council

Accessible playground development - \$12,000, 2 Evening Bingos

Golden Gate Band Parent Association

Musical equipment - 2 Evening, 2 Share the Wealth Bingos

Governor Semple Parent School Council

Walking/jogging path - 1 Evening, 4 Share the Wealth Bingos

Glenboro Advisory Council for School Leadership

Sound equipment, cement pad, risers - \$6,000, 3 Evening Bingos

Happy Thought School Improvement Team

Playground development - \$10,000, 2 Evening Bingos

H.S. Paul Parent Association Park Enhancement

Playground improvements - \$6,000, 2 Evening Bingos

Inglis School Advisory Council

Playground development - \$9,000, 1 Evening Bingo

Lorette Collegiate Parent Council/Project Metamorphosis

Development of grounds for community park - \$9,000, 2 Evening Bingos

Mitchell Parent Council

Playground development - \$1,000, 1 Evening, 4 Share the Wealth Bingos

Montrose School Parent Council

Playground development - \$10,000, 2 Share the Wealth Bingos

Norquay School Parent Advisory Group

Technological enhancements, computers - \$10,000

Parc La Salle Parents Association

Audio equipment - 2 Share the Wealth Bingos

RHG Bonnycastle School Parent Advisory Council

Playground development - 2 Matinee Bingos

Strathcona School Parent Council

Computers - \$7,000, 1 Matinee Bingo

Sun Valley School Parent Advisory Council

Playground development - 1 Evening, 4 Share the Wealth Bingos

Teulon Elementary Parent Advisory Council

Playground development - \$11,000, 3 Evening Bingos

Victoria Home and School Committee

Playground development - \$5,000

Virden Band Parent Association

Tuba - \$1,000, 1 Evening Bingo

Voyageur School Parent Council

Computers - 3 Share the Wealth Bingos

Wellington School Parent Council

Mother Earth grounds development - \$1,000, 2 Share the Wealth Bingos

Westwood School Parent Council, Thompson

Playground development - \$15,000

Whitemouth Sr/Jr School Band Parents Association

Band equipment - \$6,000, 1 Evening, 1 Share the Wealth Bingo



Whitemouth Senior/Junior School Band Parents Association

Winnipeg Inner City Youth Futures Fund
Program enhancements at 15 inner city schools - \$30,000, 30 Share the Wealth Bingos

SENIORS

TOTAL SENIORS - \$57,410, 8 Evening, 1 Matinee Bingo

Blumenort Senior Housing Inc.
Freezer and chairs - \$1,360

Club D'Age D'or St. Pie de Letellier
Roof replacement - \$5,000

Franklin Senior Services
Renovations, equipment and furnishings - \$5,000

Gwen Secter Creative Living Centre
Community Shuttle pilot project, fitness equipment - \$3,000

Keystone Manor Tenants' Association
Treadmill - \$1,200

Kosy Korner Senior Centre Inc.
Equipment and furnishings - \$2,000



Kosy Korner Senior Centre Inc., Portage la Prairie

Lawrence Resource Council, Inc.
Office furniture, computer equipment - \$5,000

Morris Area Senior Services Inc.
Computers - \$1,500

Neepawa MSOS 2005 Summer Games
Operating costs - 1 Evening Bingo

Niverville Senior Services
Improvements to outside front area - \$3,600

Pine Grove Seniors Inc.
Carpeting, flooring - \$3,000

Piney Over 40 Club
Repairs and renovations - \$1,000, 1 Evening Bingo

Plumas Seniors' Drop-In Centre
New roof - \$3,000

Richer Young at Heart Club Inc.
Building costs - \$10,000, 2 Evening Bingos

Seniors Organized Services of Souris
Computer, printer, fax - \$750

Steinbach Serving Seniors, Inc.
New facility - \$9,000, 4 Evening Bingos



Steinbach Serving Seniors

Teulon and District Seniors Resource Council
Accessible washroom - 1 Matinee Bingo

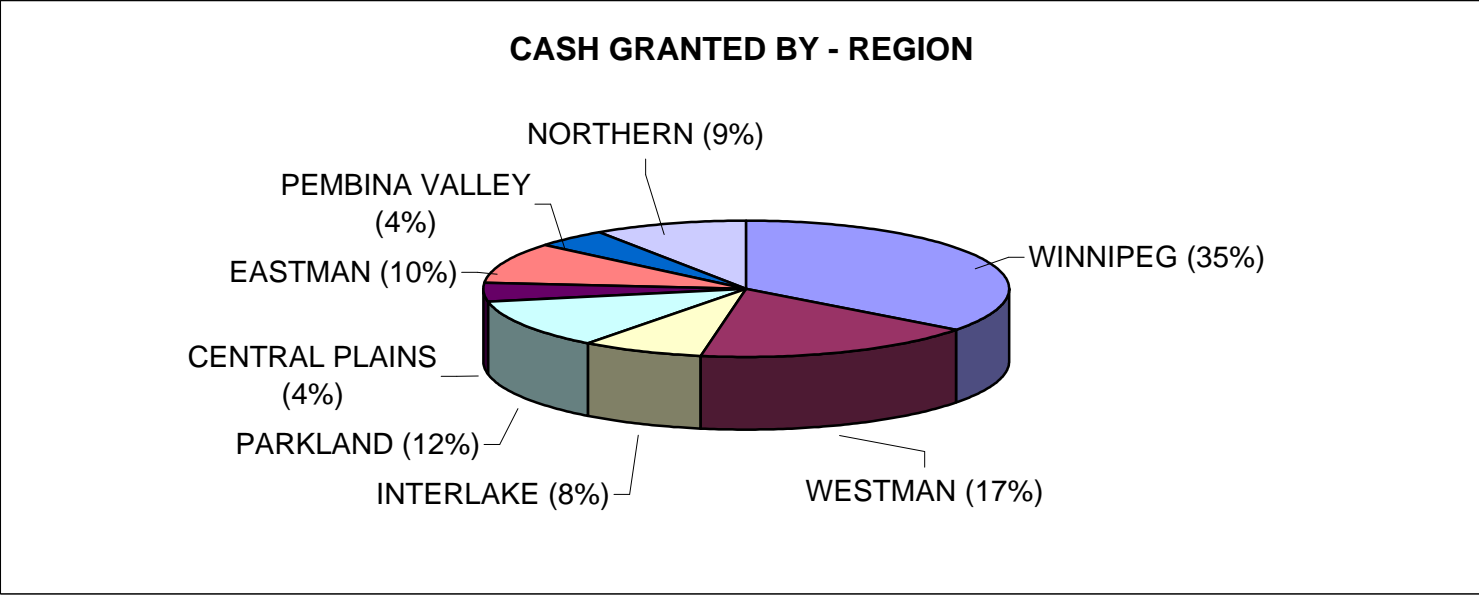
Villa Nova – Italian Canadian Community Development Corporation
Transportation services for frail elderly - \$3,000

TOTAL ALLOCATIONS - \$1,685,531
*170 Evening,
176 Share The Wealth
8 Matinee Bingos*

Photos are courtesy of the identified organizations

MANITOBA COMMUNITY SERVICES COUNCIL
Analysis Summary From April, 2004 to March, 2005

WINNIPEG (35%)	\$ 596,700
WESTMAN (17%)	\$ 294,625
INTERLAKE (8%)	\$ 127,000
PARKLAND (12%)	\$ 195,946
CENTRAL PLAINS (4%)	\$ 72,800
EASTMAN (10%)	\$ 166,600
PEMBINA VALLEY (4%)	\$ 71,860
NORTHERN (9%)	\$ 160,000
TOTAL	\$ 1,685,531



MANITOBA COMMUNITY SERVICES COUNCIL
Analysis Summary From April, 2004 to March, 2005

FAMILY & COMMUNITY (47%)	\$ 791,000
RECREATION (14%)	\$ 228,700
HEALTH RELATED (8%)	\$ 127,800
CHILDREN & YOUTH (5%)	\$ 76,000
SCHOOLS (11%)	\$ 197,000
CHILD CARE (8%)	\$ 131,946
SENIORS (3%)	\$ 57,410
CULTURE & ARTS (4%)	\$ 75,675
TOTAL	\$ 1,685,531

